

## Dual Input Single Stage Sine –Wave Inverter Based Stand Alone Solar Supply Scheme for Rural Development

G.Merlinsuba<sup>1</sup>, A.Kalaimani<sup>2</sup>

<sup>1,2</sup> (EEE, Panimalar Engineering College/ Anna University, India)

**Abstract:** This paper proposes a high performance dual input single stage inverter topology for the autonomous operation of a solar photovoltaic system. In remote areas mainly in hill stations, the electric pole cannot be inserted which makes the electrification too difficult. In order to rectify the problem of electrification in such areas, we have to implement solar power plant. The main aim of this paper is to evolve the promising solution to provide electricity where grid is not available. The proposed configuration which can boost the low voltage of photovoltaic (PV) array, can also convert the solar dc power into high quality ac power for driving autonomous loads without any filter and protection of over charge and discharge of battery. An MPPT circuit with parallel connection is implemented so that the part of the energy generated is processed by the dc–dc converter to supply dc loads. This topology has several desirable features such as low cost and compact size as number of switches used, are limited to four compared to classical two-stage inverters without transformer. In this paper analysis, simulation and experimental results are presented.

**Keywords:** Maximum power point tracking ( MPPT), photo voltaic, Renewable energy sources(RESs)

### I. Introduction

In recent years the solar photovoltaic (PV) has become one of the most promising method among the available RESs.300 million Indians reside in rural areas they do not have electricity. To change this in availability of electricity in rural areas many initiatives have been taken and majority of them are focused towards renewable energy source(RESs).PV based stand-alone systems need an energy storage element which is generally realized by utilizing a battery bank.

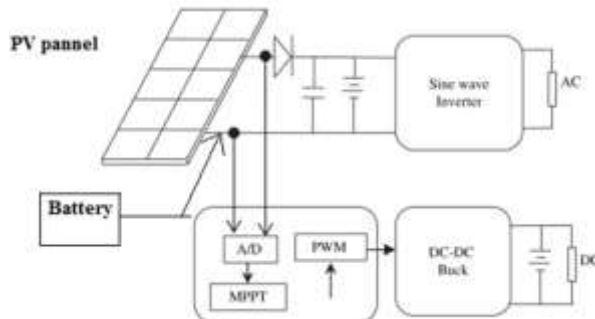


Fig.1 Solar PV system with MPPT connection

All these pv system require power electronic converters to form an interface between the pv array ,the battery and the load. In General, PV connected solar system power circuit mainly consists of a boost DC/DC converter unit and DC/AC buck inverter unit as shown in Figure.1. But the rms output voltage of buck converter is lower than the input dc voltage. This leads to increase in size of output transformer [6]. As a consequence, when an output voltage larger than the input is needed, a boost dc–dc converter must be used between the dc source and inverter as shown in Figure 2.

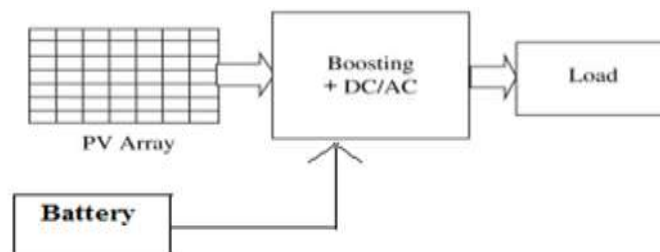


Fig.2 Proposed PV system with boost inverter

In view of the ongoing discussion, it is reasonable to conclude that the best option is to have only a dual power electronic stage between the PV array and the load to achieve all the functions namely the boosting and inversion leading to a compact system [7]. This paper proposes a new dual input and single stage boost convert using Sinusoidal Pulse Width Modulation (SPWM) technique and MPPT algorithm, suitable for PV fed stand alone applications in remote areas where the electrification is not possible. The proposed voltage source boost inverter naturally generates rms output ac voltage lower or higher than the input dc voltage with reduced number of components, depending on the duty cycle produced by Sinusoidal Pulse Width Modulation (SPWM).

## II. Proposed Topology and Operational Principle

### 2.1. Introduction

The proposed boost dc-dc converter gives an output voltage that is always higher than the input voltage. The output voltage level of the PV panel is very low, that voltage is further enhanced by this proposed boost converter [18]. In this paper boost voltage source inverter generates an ac output voltage which can be made lower or higher than given input voltage from solar array and battery, by varying the duty cycle based on MPPT and SPWM. In this proposed boost inverter the load is connected different manner between two dc-dc converter and modulating the dc-dc converter output voltage sinusoidal. The two converters P and Q produce a dc biased sine-wave output, although each source produce only a unidirectional voltage. Modulation technology produce  $180^\circ$  out of phase with the other which only boost the voltage across the load as shown in Figure 3. The dc bias appears at each end of the load with respect to ground the differential dc voltage appear across is zero. The push pull arrangement gives a bipolar voltage at output.

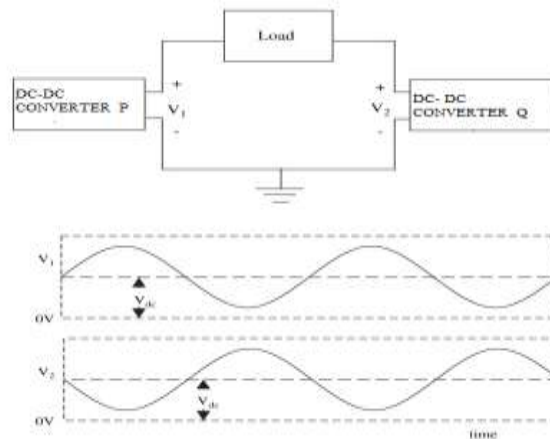


Fig.3 DC-DC convention with boost characteristics

### 2.2. Principle of operation of DC-DC boost converter

Boost DC-DC converter output is designed to 350V dc to generate an ac voltage of 230V. A stand alone system is designed with low voltage levels for the PV array and the battery in the range of 24-36V.

#### Mode1: S1 OFF, S2 ON

Figure 4 shows the operative circuit during the period ' $D T_s$ ' of a Switching period. The inductor current flows from the input source to energize the inductor.

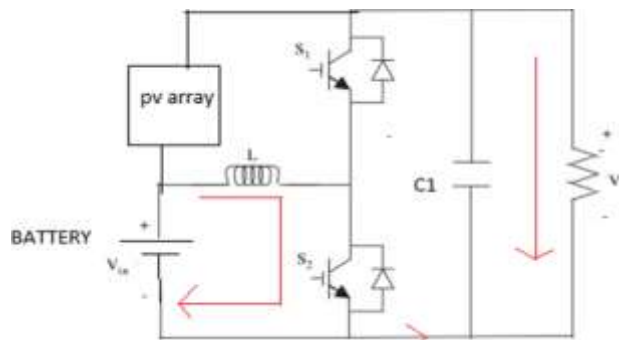


Fig.4 Converter Mode of Operation 1

#### Mode2: S1 ON, S2 OFF

Figure 5 shows the operative circuit during the period  $(1-D)T_s$  of the switching period. The inductor current cannot change instantaneously, inductor current starts to decrease. This negative inductor current develops sufficient voltage  $L \cdot di/dt$  with a polarity such as to drive the inductor current through  $S_1$  to charge the output capacitor  $C_1$ .

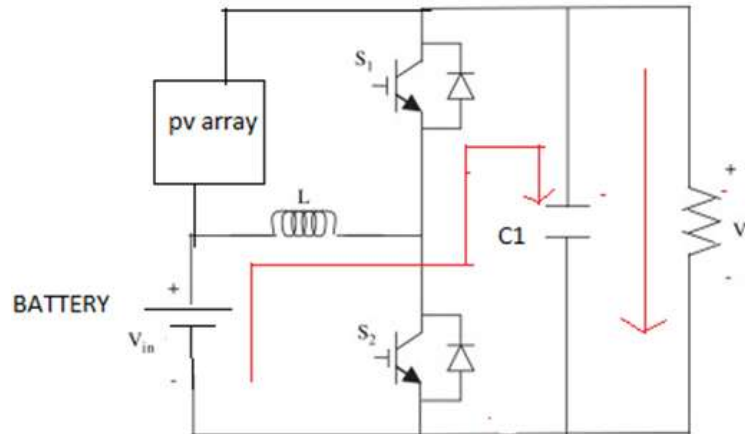


Fig.5 converter mode of operation2

**Boost Inverter:**

When switch  $S_2$  is closed and  $S_1$  is open, current  $i_L$  rises quite linearly, diode  $D_1$  is reverse polarized, capacitor  $C$  supplies energy to the output stage, and voltage  $V_1$  decreases. Once the switch  $S_2$  is open and  $S_1$  is closed, the current  $i_L$  flows through capacitor  $C$  and the output stage. The current  $i_L$  decreases while capacitor  $C$  recharges. This is repeated for the consecutive switching periods to generate a capacitor voltage shown in Fig. 6. The 180° phase shift can be achieved by triggering the diametrical switches simultaneously.

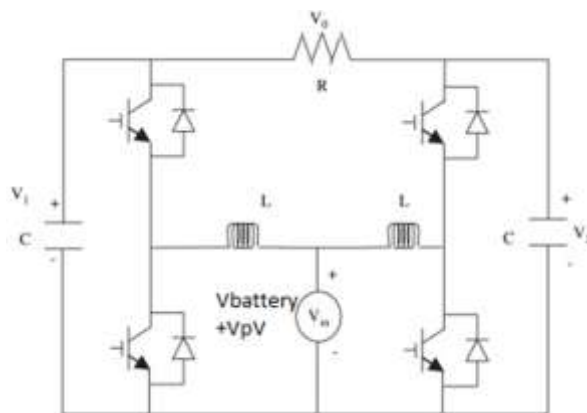


Fig.6.Boost inverter used in the proposed scheme

**2.3. Expressions**

From Figure 4 the voltage across the inductor "L" can be expressed as  $V_L = V_{PV}$  when  $S_1$  is ON

$$V_L = -V_{BATTERY} \text{ when } S_2 \text{ is ON} \tag{1}$$

$$\text{Consider average voltage drop across the inductor is } V_L = D \cdot V_{PV} - (1-D) \cdot V_{BATTERY} \tag{2}$$

Where "D" is the duty ratio of the switch  $S_1$ . Equating the average voltage drop across the inductor to zero.

$$0 = D \cdot V_{PV} - (1-D) \cdot V_{BATTERY}$$

$$D \cdot V_{PV} = (1-D) \cdot V_{BATTERY}$$

$$V_{PV} = ((1-D)/D) \cdot V_{BATTERY} \tag{3}$$

From (3) it can be concluded that PV voltage  $V_{PV}$  can be controlled by changing "D" as battery voltage assumed to be a constant. Using MPPT operation change in "D" can be carried out.

**2.4. Design of Passive Components**

Inductor value

The value of inductor L is calculated on the basis of the amount of current ripple ( $\Delta i_L$ )

$$L = V_i \cdot D / (\Delta i_L \cdot F_s)$$

Capacitor value

In boost converter the capacitor has to handle a large swing in the current through it.  $C=I_o *D/ (\Delta V_o *Fs)$ . In this prototype “C” used is 1000µF.

### III. Control Structure

The fundamental principle behind the stand alone system required to perform the following works. 1, maximum power extraction from pv panel using MPPT algorithm 2, To have control over the battery usage by limiting charge 3, DC-DC Boost convention. In order to achieve the three tasks MPPT control loop is required to operate in four modes.

#### 1. Control Action 1 (Mode1):

When the availability of PV power is more at that time MPPT mode of operation is selected. In this case MPPT algorithm block generate reference voltage  $V_{refpv}$  of 350-460Vdc. However to achieve this voltage the two conditions must be satisfied in MPPT mode. They are 1,  $P_{maxpv} > P_{load}$  and battery should have the capacity to consume surplus power without being overcharged. 2,  $P_{maxpv} < P_{load}$  and batter should supply  $P_{load} - P_{maxpv}$  without being over discharge. Where  $P_{maxpv}$  is the addition of battery power and load power.

#### 2. Control Action2 (Mode2):

This mode depends on the state of charge(SOC) level of battery. In order to operate in this mode the maximum permissible limit of battery  $I_{battery\max}$  should be maintained to prevent damage due to overcharge. The maximum battery power can be calculated as  $P_{battery\max} = I_{battery\max} * V_{battery}$ . The condition in which this mode cannot be operated is  $P_{maxpv} > P_{load}$  that is excess power from solar panel is more than battery capacity in this stage. The main task of this mode is to reduce the power extraction from PV a value given by  $P_{maxpv} = P_{battery} + P_{load}$ . This mode of operation is called as NON-MPPT mode. From control action 1  $V_{pvref}$  is generated the error between  $V_{pvref}$  and  $V_{pv}$  which is passed through a PI controller to generate inductor current reference. The upper limit and lower limit of current to prevent overcharging and over discharging the battery are as follows.  $I_{lmax} = I_{battery\max} + I_{pv}$  and  $I_{lmin} = I_{battery\min} + I_{pv}$ .

#### 3. Control Action3 (Mode3):

If there is no sunlight (rain ,cloud) the system operates in battery operating mode. The current reference generated from control block2. When this reference current  $I_{LREF}$  lies within the derived limit ,the system will operates in MPPT mode  $I_{pv} > 0$  or in battery operating mode  $I_{pv} < 0$ .

#### 4. Control Action4 (MODE4):

The situation when maximum power extracted from PV array less than load demand the system will operate in this mode.  $P_{maxpv} < P_{load}$  and in such situation battery does not have the capacity to supply  $P_{load} - P_{maxpv}$ , so system need to be shutdown to prevent damage of battery. When the inductor current reaches minimum limit, thereby indicating over discharge limit is reached control block3 remove all the gate pulses from IGBT switches through control algorithm and shutdown the system[1],[9],[12].

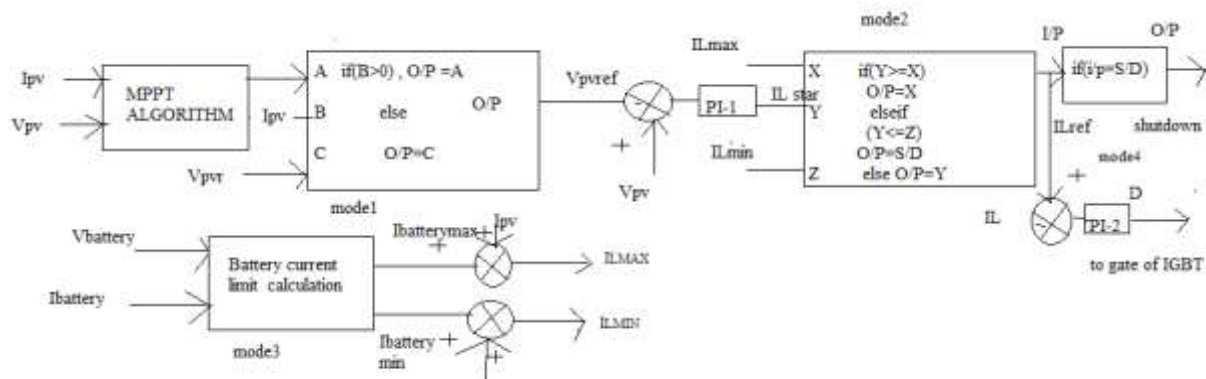


Fig.7 control structure for the proposed system

## IV. Simulation

### 4.1. Basic Simulation Block Diagram.

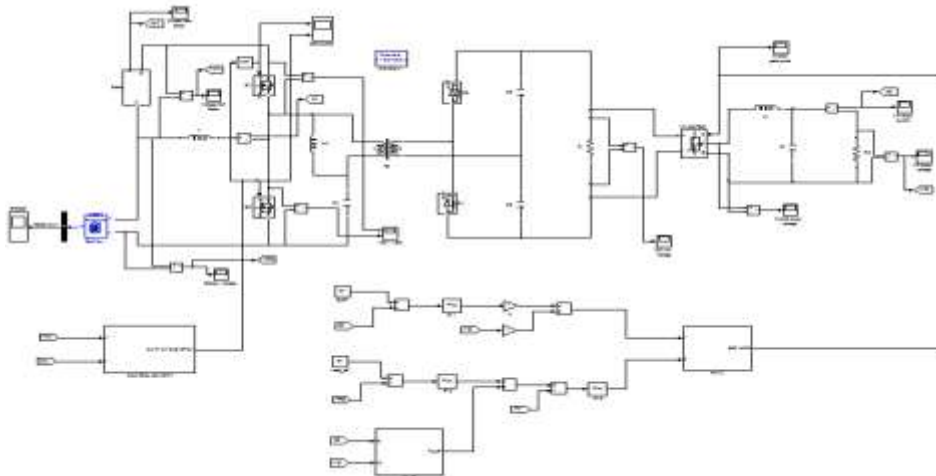


Fig.8 simulation diagram

Fig.8 shows the simulation diagram of our project. Both solar array and battery will provide power to the load. Solar array consists of five solar panels connected in series. Input from both the sources is DC. Converter (S1 and S2) converts input DC into AC. Boost converter enhances the voltage level. In order to correct the frequency it is again converted into DC by the voltage doubler. Diodes D3, D4 and Capacitors C2, C3 constitutes as a voltage doubler. The output of the converter is given to the inverter which converts DC into single phase, 50Hz Ac. The harmonics in the inverter output voltage can be reduced by passing into LC filter. Then the harmonic free voltage is supplied to the load.

### 4.2. Proposed Algorithm

Fig.9 shows the simulation diagram for MPPT algorithm using Incremental Conductance method. The Incremental conductance method can determine that the MPPT has reached the Maximum Power Point and stop perturbing at the operating point. If this condition is not met, the direction in which the MPPT operating point must be perturbed can be calculated using the relationship between  $dI/dV$  and  $-I/V$ . This relationship is derived from the fact that  $dP/dV$  is negative when the MPPT is to the right of the MPP and positive when it is to the left of the MPP. This algorithm has advantages over P&O such that it can determine when the MPPT has reached the Maximum Power Point, where P&O oscillates around the MPP. Also, Incremental Conductance Method can track the rapidly increasing and decreasing irradiance conditions with higher accuracy[12].

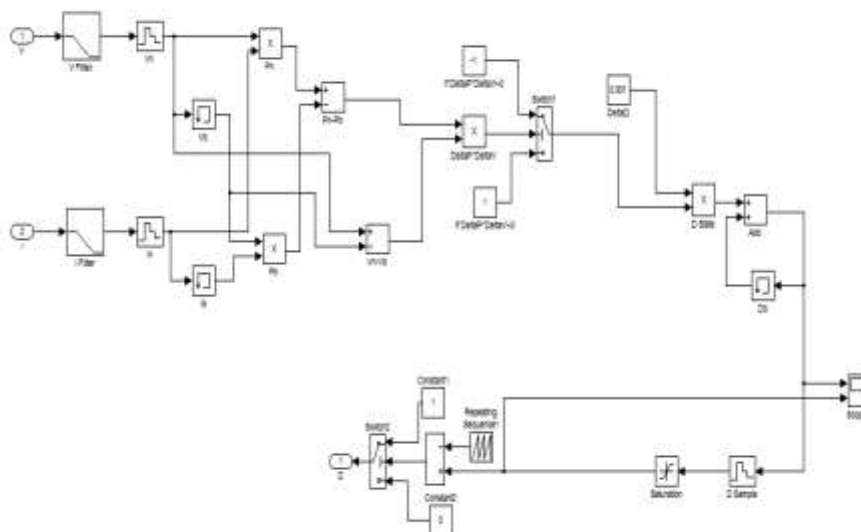


Fig.9 Simulation Diagram of MPPT

### 4.3. Simulation Results

#### 4.3.1. Voltage from Solar Array

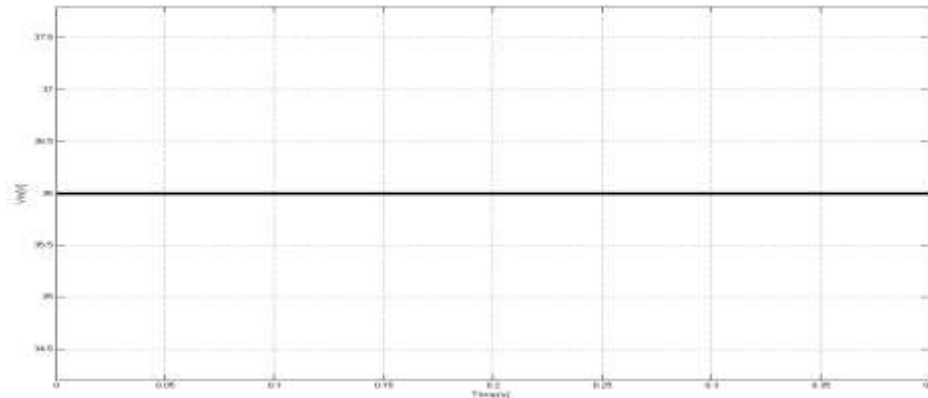


Fig.10 voltage from Solar Array

Fig.10 shows the input voltage waveform from the solar array. Input voltage from the solar array is DC. In this simulation input voltage level is 36V.

#### 4.3.2 Current from Solar Array

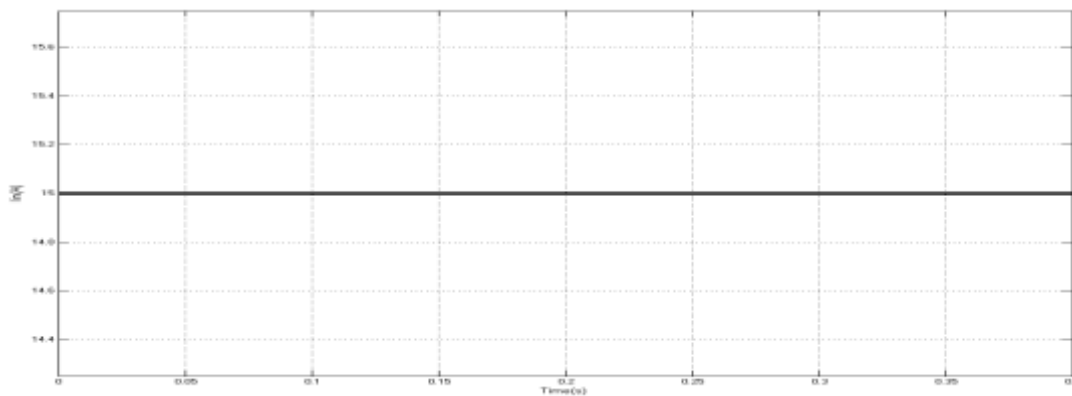


Fig.11 Current from Solar Array

Fig.11 shows the input current from the solar array. The generated current depends on the insulation level, irradiation, age of solar cell, characteristic of material. In this simulation the input current is 15 A.

#### 4.3.3 Voltage from Battery

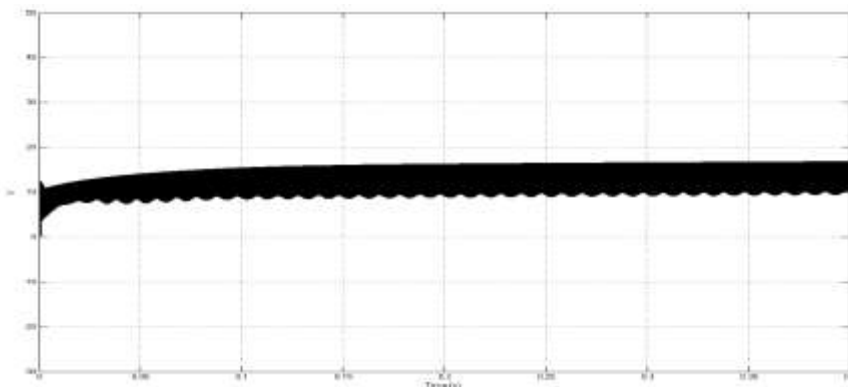


Fig.12 Voltage from Battery

Fig.12 shows the voltage stored in the battery. When generated solar power is more than the load demand, the surplus power is stored in the battery.

#### 4.3.4 DC Link Voltage

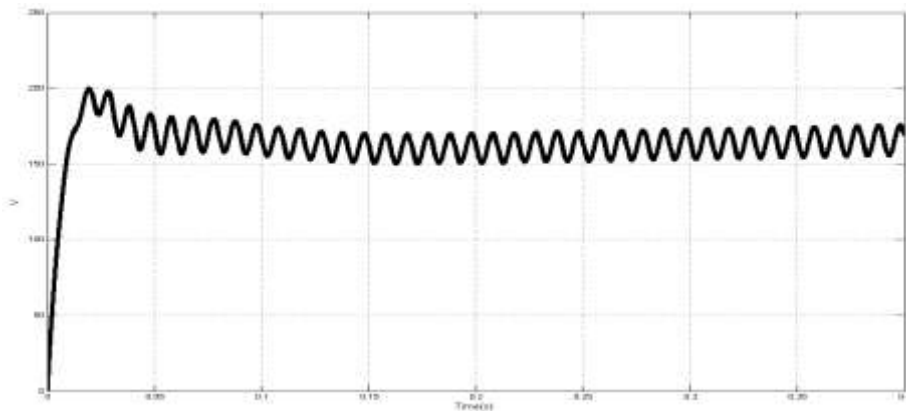


Fig.13 DC link voltage

Fig.13 shows the waveform of DC link voltage which is measured across the capacitor. The Dc link voltage should be maintained within the desired range of 350-460V.

#### 4.3.5 Inverter Gate Pulses

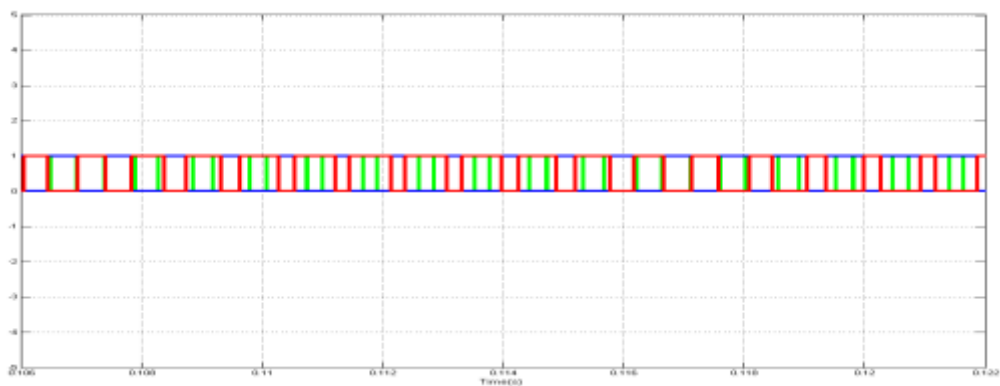


Fig.14 Inverter gate pulses

Fig.14 shows the gate pulses given to the switches in the inverter. As Inverter is kept as a single block, the gate pulses are also shown in single graph.

#### 4.3.6 Inverter Output Voltage

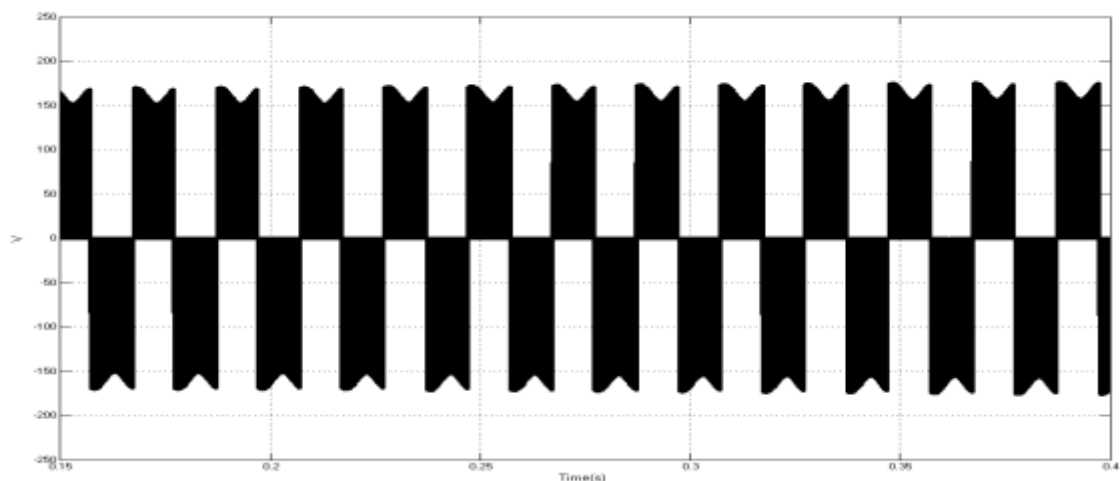


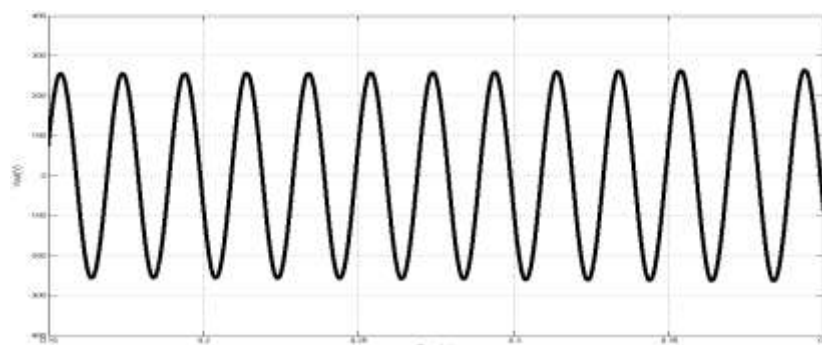
Fig.15 Inverter Output Voltage



The DC link voltage which is measured across the capacitor is given to the inverter circuit is shown in Fig.15 Inverter converts DC voltage into AC voltage.

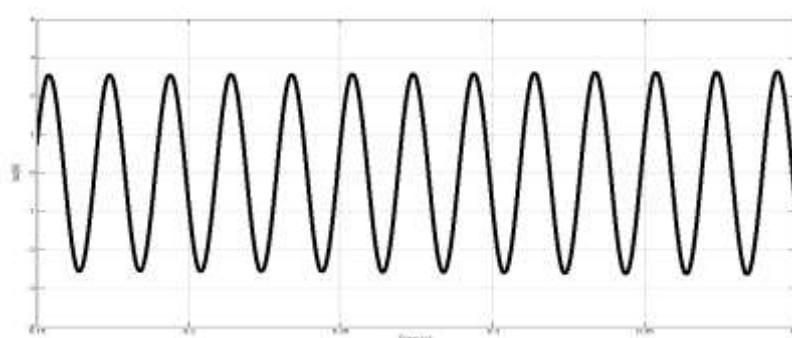
#### 4.3.7 Output voltage

Fig.16 shows the output voltage waveform which is measured across the load. Inverter output voltage contains some harmonics. To eliminate this harmonics, inverter output voltage is sent through the LC filter, and then output voltage is measured. The output voltage level is 230V.



**Fig.16** Output voltage

#### 4.3.8 Output current



**Fig.17** Output current

Fig.17 shows the output current waveform measured at the load.

### V. Experimental Verification

The behavior of dual input single stage boost converter based stand alone power supply system described in this paper has been validated using a prototype. The controller of the prototype is implemented using the MICROCONTROLLER PIC16F876A. For an input voltage of 36Vdc output of 94Vdc as well as 64V(ac) rms have been obtained for a duty cycle of 0.4 and modulation index of 0.5 in sinusoidal pulse width modulation. Figure 18. shows the photograph of the experimental setup. Table 5.1 gives experimental result.



**Fig.18** Photograph of the experimental setup



These are the readings taken from the hardware circuit. It shows how the output voltage changes as the insolation level changes.

**Table 5.1 Output voltage at different time**

Sl.no.	Time	Output Voltage (V)
1	10:00 am	64
2	12:00 pm	65
3	1:00 pm	69
4	2:00 pm	70
5	4:00 pm	65

## VI. Conclusion

A dual input single stage solar PV-based stand-alone scheme for application in rural areas is proposed in this paper. It is realized by involving a new single stage boost converter. The salient features of the proposed scheme include the following: 1) boosting of the dc voltage are accomplished in a single converter; 2) requirement of dedicated converter for ensuring MPP operation of the PV array is eliminated leading to enhanced utilization of power converters; 3) enhancement in battery charging efficiency as a single converter is present in the battery charging path; 4) lesser component count as only two power conversion stages are required. The efficacy of the scheme is verified by performing detailed simulation studies. The viability of the scheme is confirmed through detailed experimental studies for different time.

## References

### Journal Papers:

- [1] Alajmi, B.N., Ahmed, K.H., Finney, S.J. and Williams, B.W. (2013) 'A maximum power point tracking technique for partially shaded photovoltaic systems in microgrids', *IEEE Trans. Ind. Electron.*, vol. 60, no. 4, pp. 1596–1606.
- [2] Bergveld, H.J. (2013) 'Module-level dc/dc conversion for photovoltaic systems: The delta-conversion concept', *IEEE Trans. Power Electron.*, vol. 28, no. 4, pp. 2005–2013.
- [3] Chattopadhyay, R. and Chatterjee, K. (2012) 'PV based stand alone single phase power generating unit', in *Proc. IEEE IECON*, pp. 1138–1144.
- [4] Chen, Y.M., Huang, A.Q. and Xunwei, Y. (2013) 'A high step-up three-port dc-dc converter for stand-alone PV/battery power systems', *IEEE Trans. Power Electron.*, vol. 28, no. 11, pp. 5049–5062.
- [5] Chen, Y.M., Liu, Y.C. and Wu, F.Y. (2002) 'Multi-input dc/dc converter based on the multiwinding transformer for renewable energy applications', *IEEE Trans. Ind. Appl.*, vol. 38, no. 4, pp. 1096–1104.
- [6] Debnath, D. and Chatterjee, K. (2013) 'Transformer coupled multi-input two stage stand alone solar photovoltaic scheme for rural areas', in *Proc. IEEE IECON*, pp. 7028–7033.
- [7] Debnath, D. and Chatterjee, K. (2013) 'A buck-boost integrated full bridge inverter for solar photovoltaic based stand alone system', in *Proc. IEEE PVSC*, pp. 2867–2872.
- [8] Erickson, R.W. and Maksimovic, D. (1997) 'Fundamentals of Power Electronics'. Norwell, MA, USA: Kluwer.
- [9] Fakhham, H., Lu, D. and Francois, B. (2011) 'Power control design of a battery charger in a hybrid active PV generator for load-following applications', *IEEE Trans. Ind. Electron.*, vol. 58, no. 1, pp. 85–94.
- [10] Li, W. and He, X. (2011) 'Review of nonisolated high-step-up dc/dc converters in photovoltaic grid-connected applications', *IEEE Trans. Ind. Electron.*, vol. 58, no. 4, pp. 1239–1250.
- [11] Lu, D.D.C. and Agelidis, V.G. (2009) 'Photovoltaic-battery-powered dc bus system for common portable electronic devices', *IEEE Trans. Ind. Electron.*, vol. 24, no. 3, pp. 849–855.
- [12] Miyatake, M., Veerachary, M., Toriumi, F., Fujii, N. and Ko, H. (2011) 'Maximum power point tracking of multiple photovoltaic arrays: A PSO approach', *IEEE Trans. Aerosp. Electron. Syst.*, vol. 47, no. 1, pp. 367–380.
- [13] Mutoh, N. and Inoue, T. (2007) 'A control method to charge series-connected ultracapacitor double-layer capacitors suitable for photovoltaic generation systems combining MPPT control method', *IEEE Trans. Ind. Electron.*, vol. 54, no. 1, pp. 374–383.
- [14] Sechilariu, M., Wang, B. and Locment, F. (2013) 'Building integrated photovoltaic system with energy storage and smart grid communication', *IEEE Trans. Ind. Electron.*, vol. 60, no. 4, pp. 1607–1618.
- [15] Shenoy, P.S., Kim, K.A., Johnson, B.B. and Krein, P.T. (2013) 'Differential power processing for increased energy production and reliability of photovoltaic systems', *IEEE Trans. Power Electron.*, vol. 28, no. 6, pp. 2968–2979.
- [16] Shimizu, T., Hirakata, M. and Kamezawa, T. (2001) 'Generation control circuit for photovoltaic modules', *IEEE Trans. Power Electron.*, vol. 16, no. 3, pp. 293–300.
- [17] Stauth, J.T., Seeman, M.D. and Kesarwani, K. (2013) 'Resonant switched capacitor converters for sub-module distributed photovoltaic power management', *IEEE Trans. Power Electron.*, vol. 28, no. 3, pp. 1189–1198.
- [18] Testa, A., De caro, S., Scimone, T. and Panarello, S. (2012) 'A buck-boost based dc/ac converter for residential PV applications', in *Proc. IEEE SPEEDAM*, pp. 114–119.
- [19] Vazquez, M.J.V., Marquez, J.M.A. and Manzano, F.S. (2008) 'A methodology for optimizing stand-alone PV-system size using parallel-connected dc/dc converters', *IEEE Trans. Ind. Electron.*, vol. 55, no. 7, pp. 2664–2673.
- [20] Wang, H. and Zhang, D. (2010) 'The stand-alone PV generation system with parallel battery charger', in *Proc. IEEE ICECE*, pp. 4450–4453.
- [21] Wohlgenuth, J.H. and Kurtz, S.R. (2012) 'How can we make PV modules safer?' in *Proc. 38th IEEE Photovoltaic Spec. Conf.*, pp. 3162–3165.